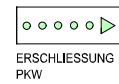
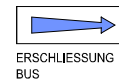
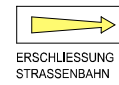
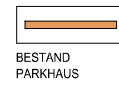
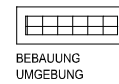
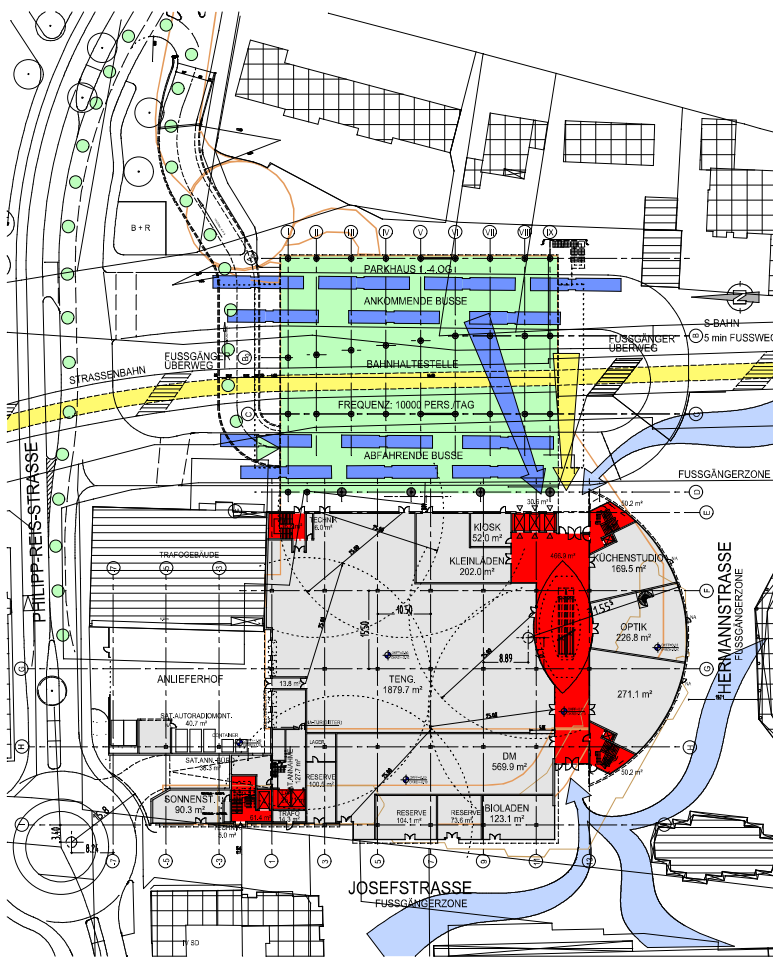




**NEUBAU EINES EINKAUFSCENTERS
MIT BÜRO- UND FREIZEITNUTZUNG, KÖLN
VERKAUFSFLÄCHE: ca. 16000 qm
BÜRO- UND PRAXISFLÄCHE: ca. 5000 qm
FITNESSCENTER: ca. 1500 qm
TIEFGARAGENSTELLPLÄTZE: 150
PARKHAUSSTELLPLÄTZE: 400**

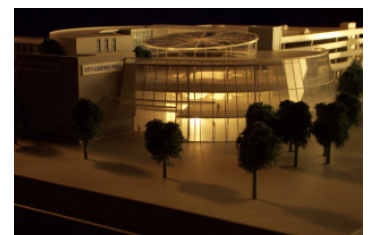
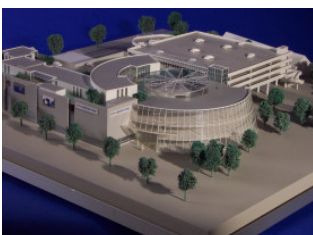
AUSFÜHRUNG: 7/2002 - 1/2004



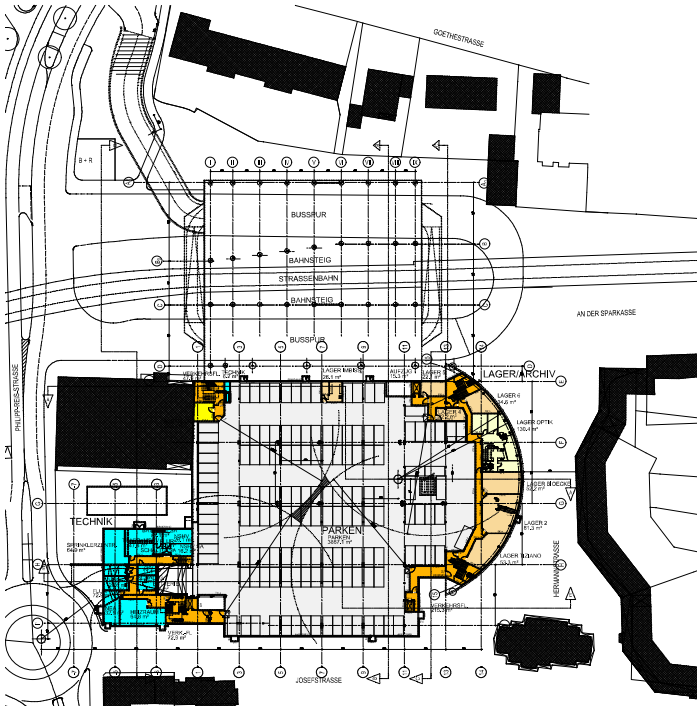
STÄDTEBAULICHE SITUATION



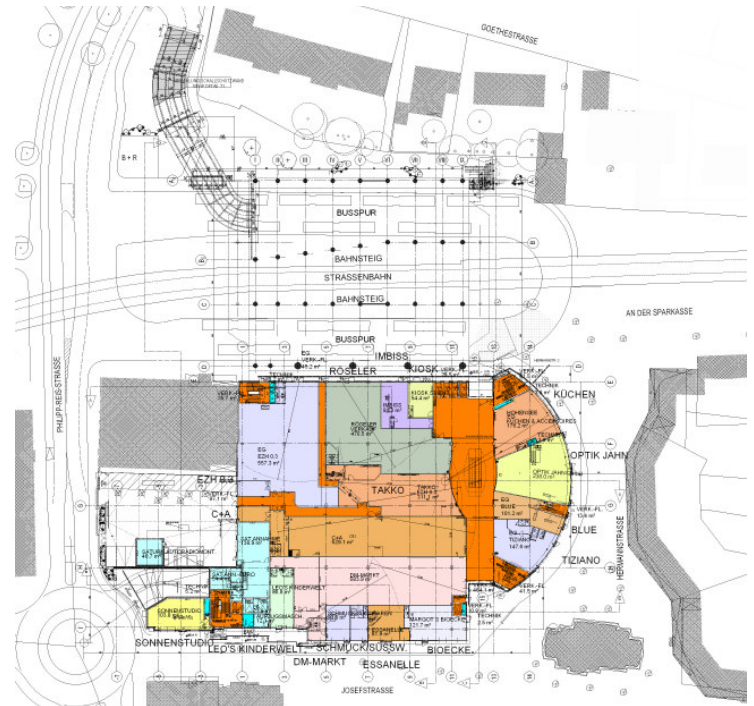
BESTAND



MODELLFOTOS



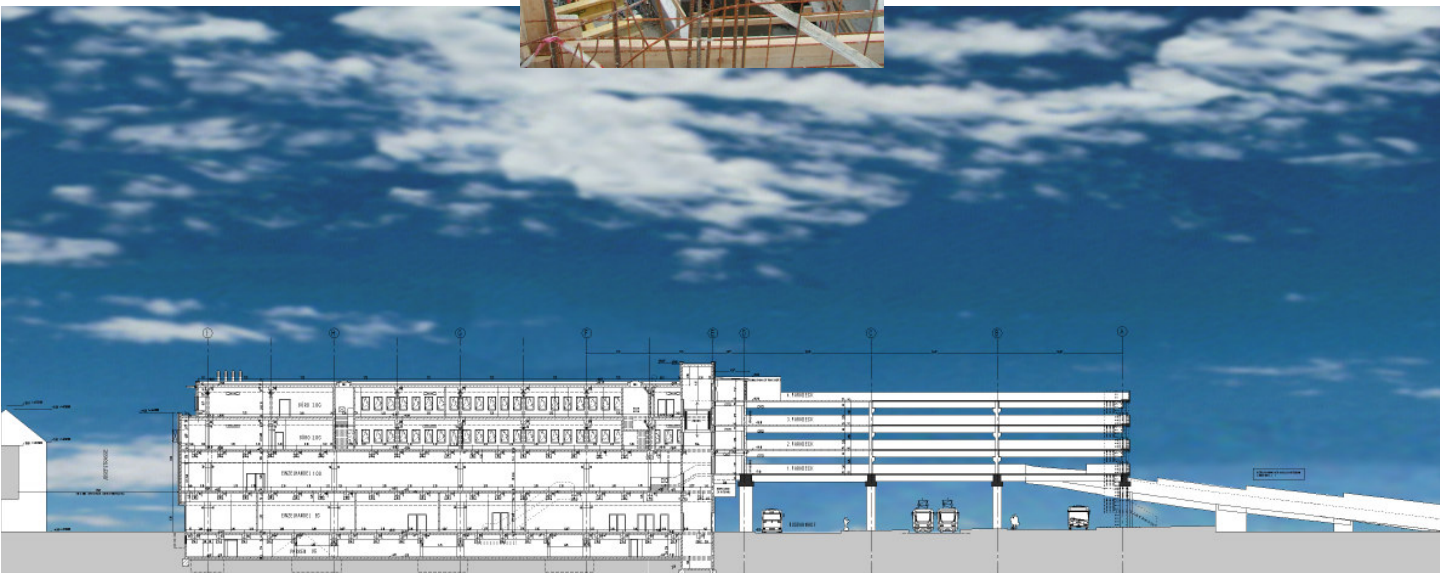
TERGESCHOSS



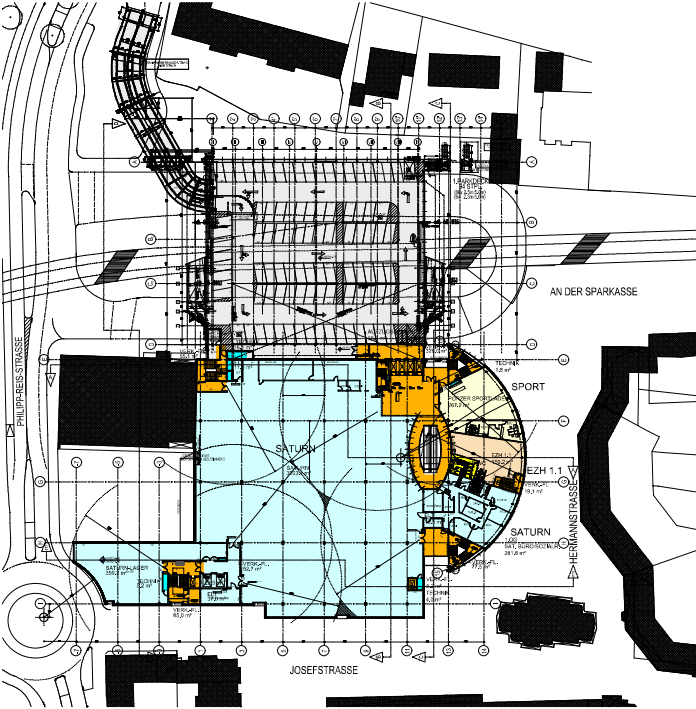
ERDGESCHOSS



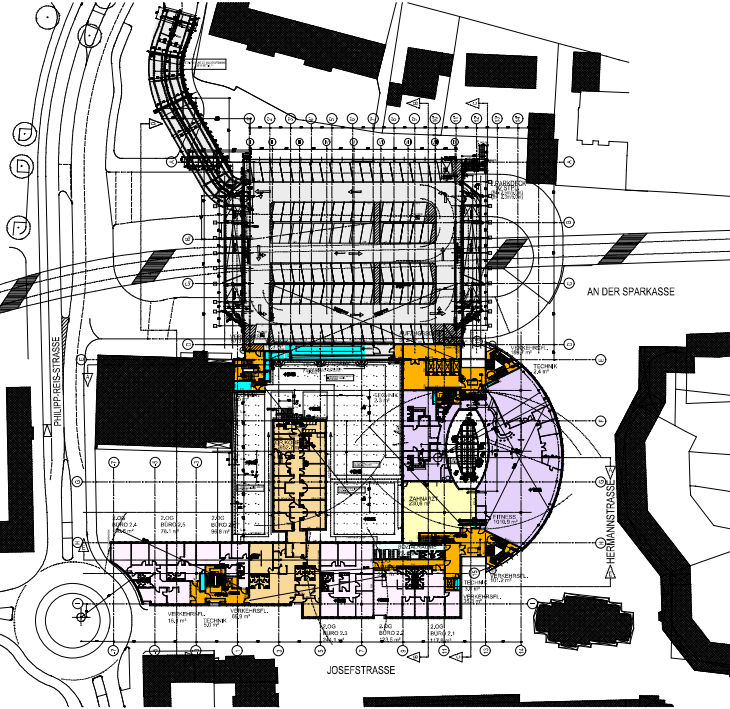
ENTSTEHUNG



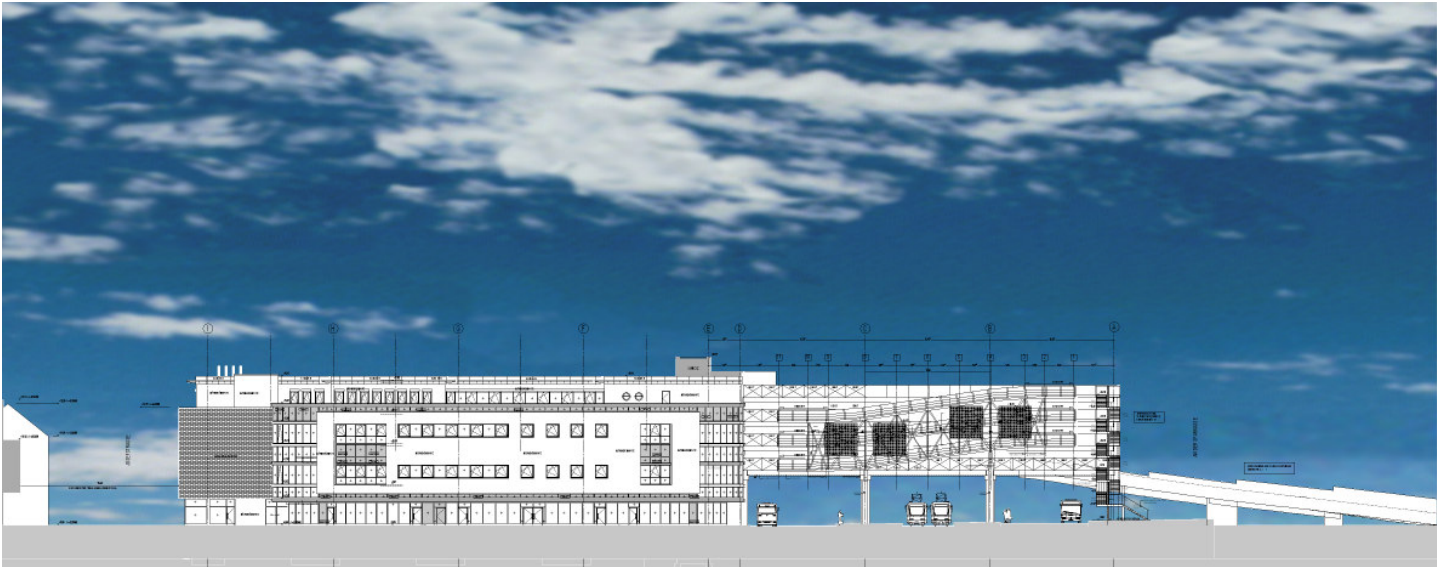
SCHNITT B-B



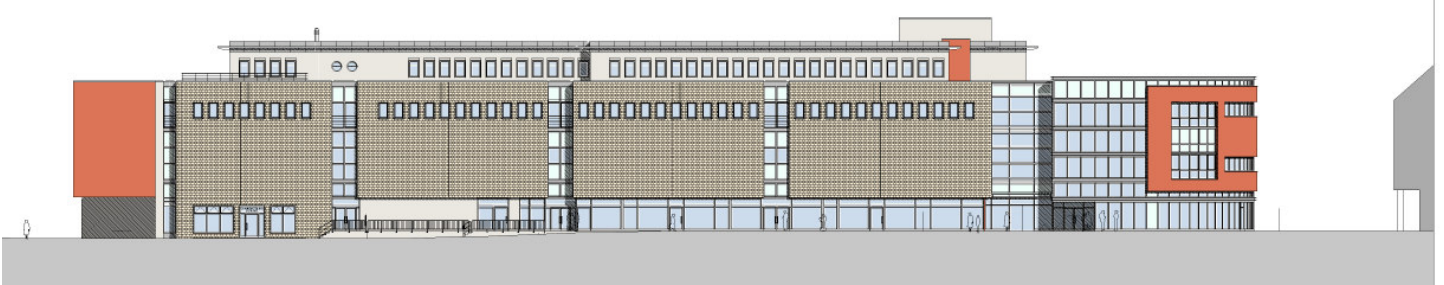
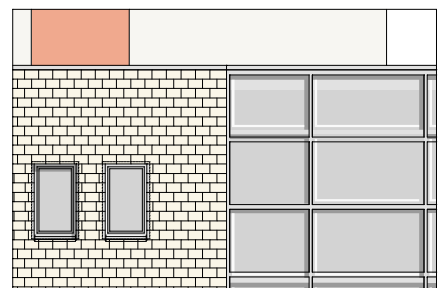
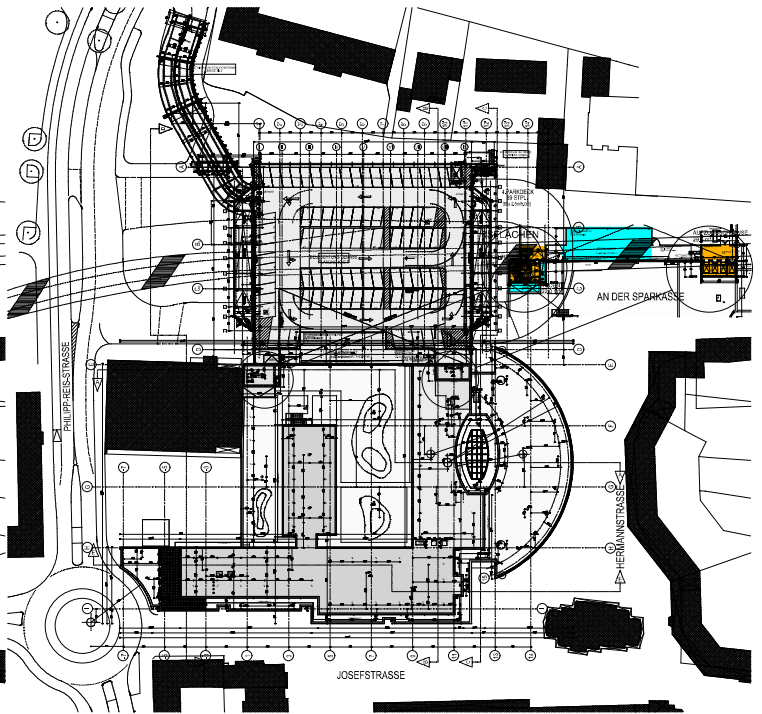
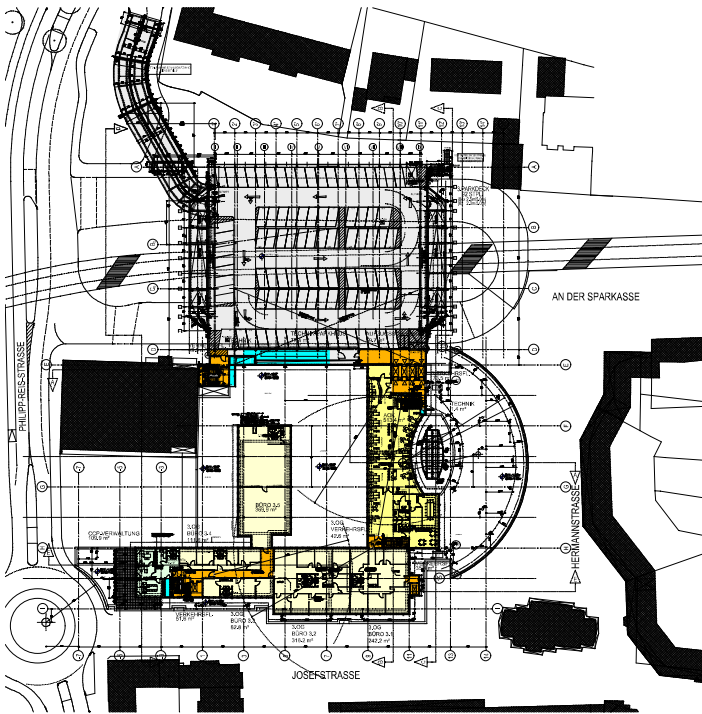
BERGESCHOSS



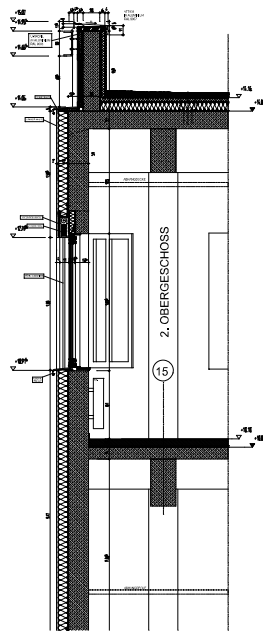
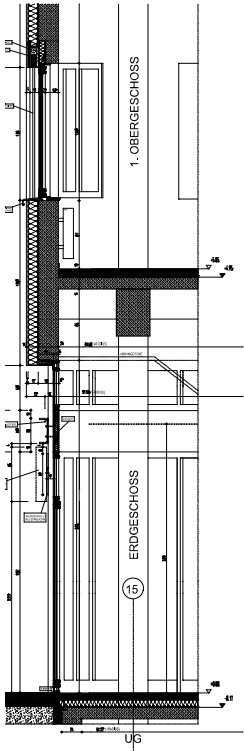
2.OBERGESCHOSS



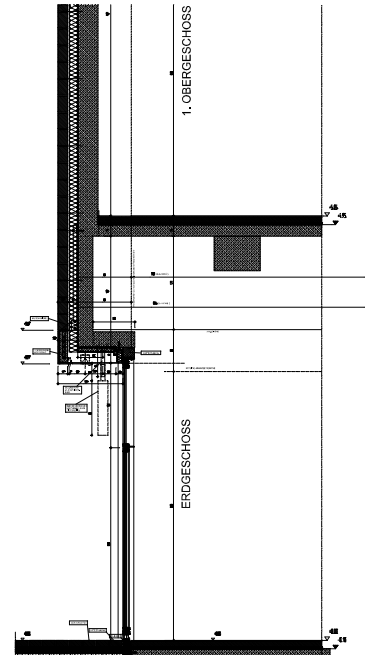
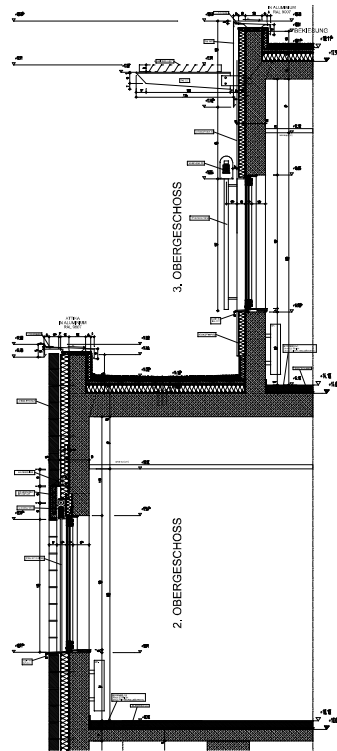
ANSICHT HERMANNSTR.



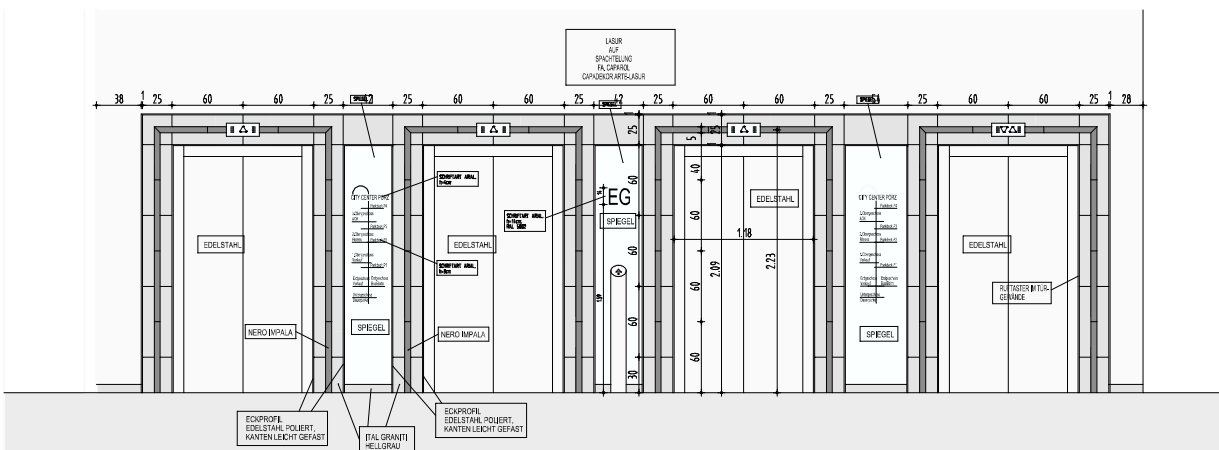
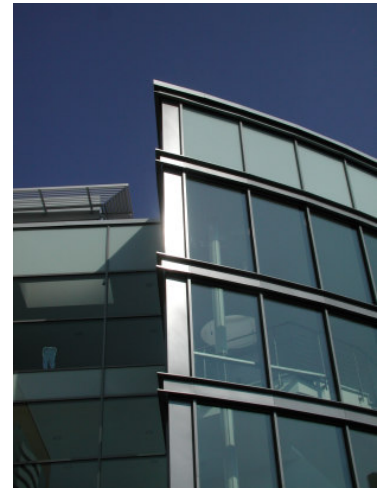
ANSICHT JOSEFSTR.



**FASSADENSCHNITT
HERMANNSTR.**



**FASSADENSCHNITT
JOSEFSTR.**



ANSICHT AUFZUGSPORTAL