

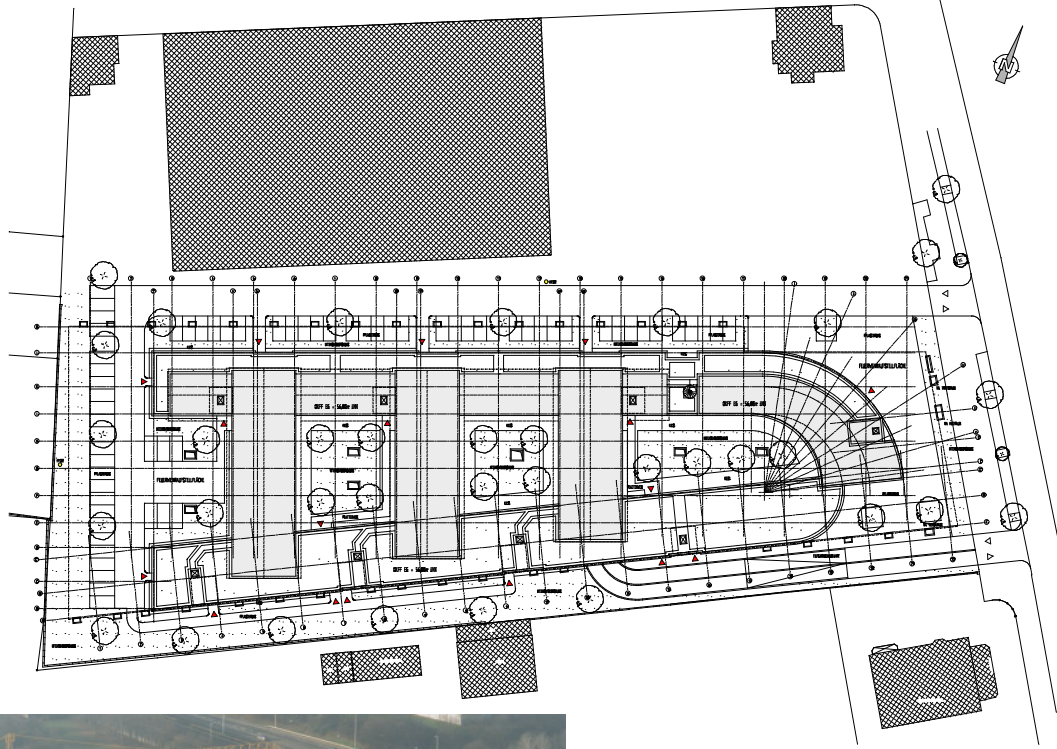


**NEUBAU DES BÜROPARKS
"ALTE WAGENHALLE" 53117 BONN**

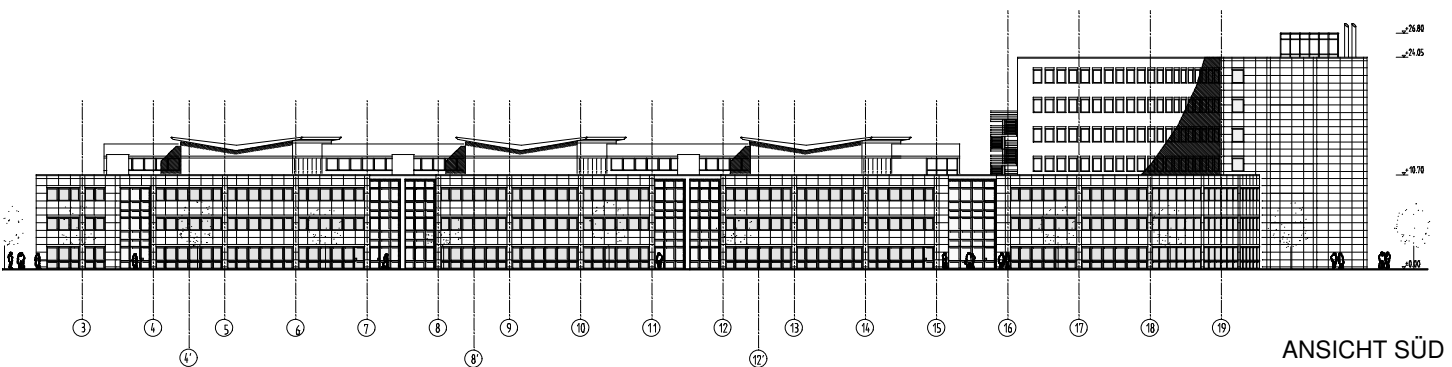
NUTZFLÄCHE: ca. 17000 qm

PLANUNG: 1993

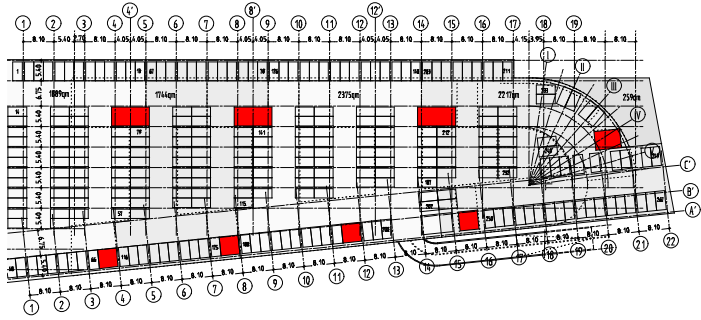
AUSFÜHRUNG: 1999/2000



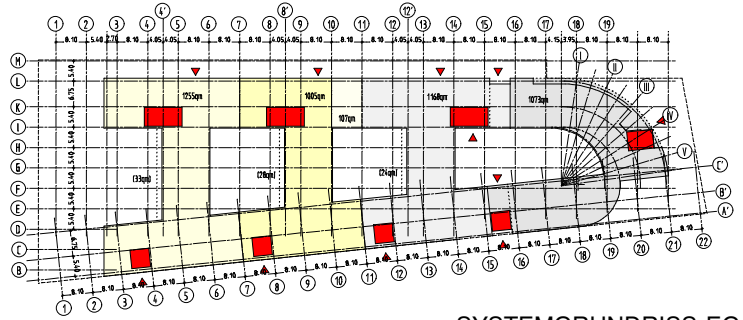
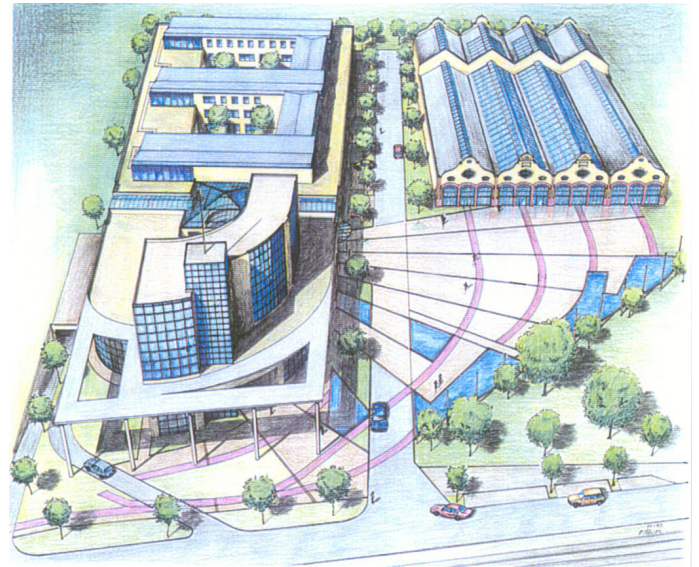
ÜBERSICHTSPLAN



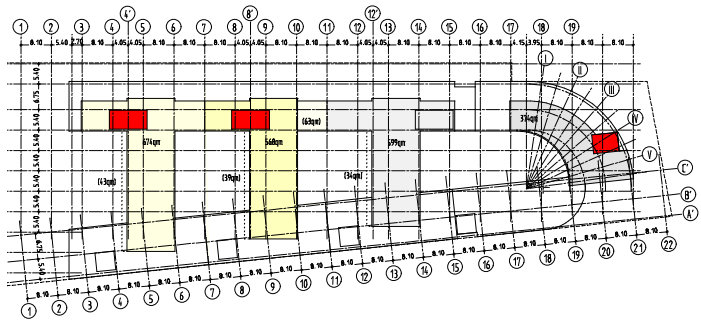
ANSICHT SÜD



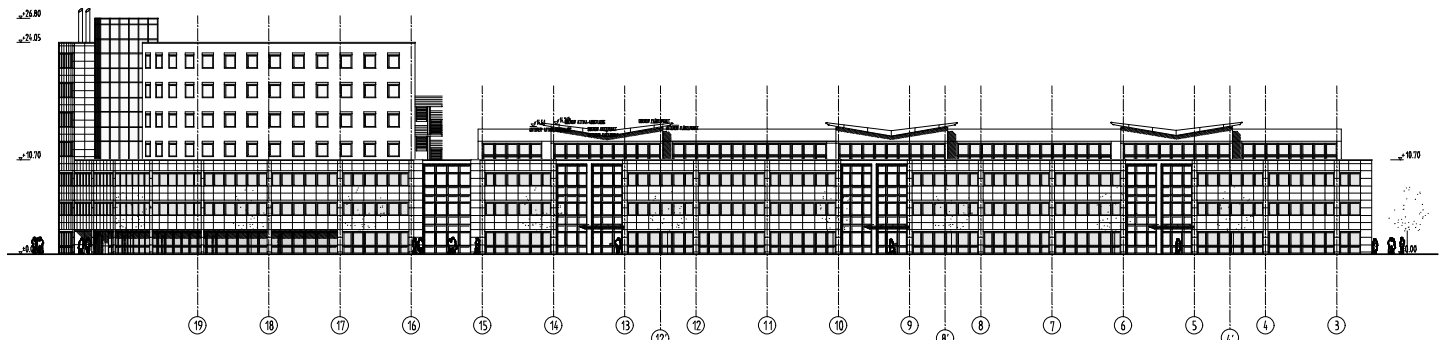
STEMGRUNDRISS UG



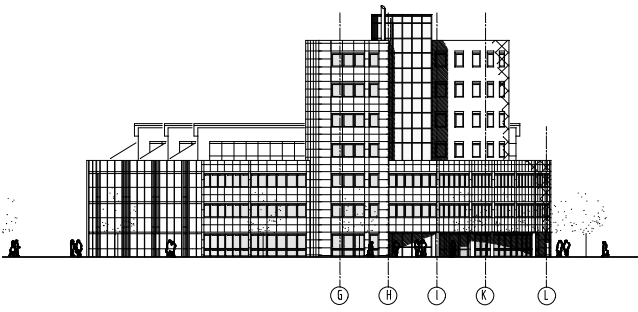
SYSTEMGRUNDRISS EG



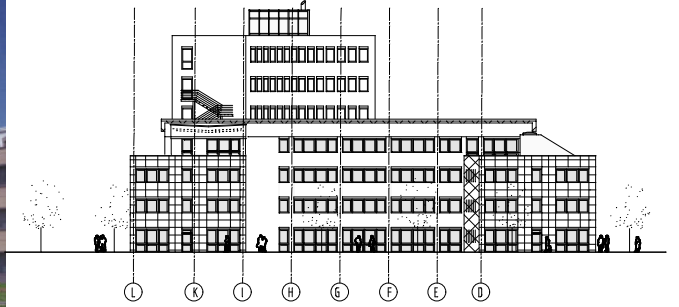
STEMGRUNDRISS STG



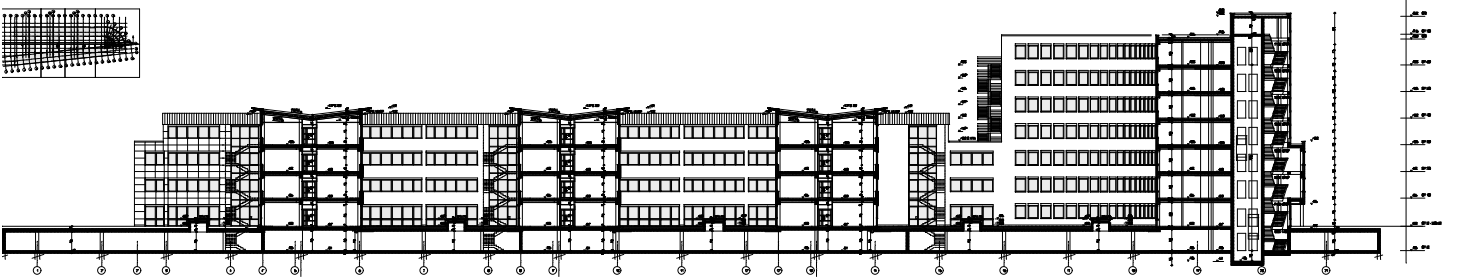
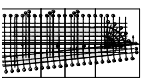
ANSICHT NORD



ANSICHT OST



ANSICHT WEST



SCHNITT A-A



ALTE WAGENHALLE

